

# 2015 NATIONAL SUMMIT ON INNOVATION & ENTREPRENEURSHIP: A ROADMAP FOR INCLUSION

Tuesday, September 22, 2015  
Oakland Marriott City Center  
Oakland, CA

**AWIS** | Association for  
Women in Science

@AWISNational

<http://www.innovation-summit.org/>

#womeninvent

## THE SUMMIT

**Background:** Capitalizing on our nation's entire intellectual potential is crucial for global competitiveness and for remaining an attractive destination for future innovators and entrepreneurs to obtain an education. America's economy is critically dependent upon innovation driven by the STEM work sectors (science, technology, engineering, and mathematics). Historically, STEM entrepreneurship has been fueled by an innovation pipeline from research universities. Small startup companies are also key components for innovation: in 2010, U.S. small businesses accounted for 18% of U.S. industry R&D (totaling over \$40 billion), and employed almost 400,000 scientists, engineers, and technicians. However, gender gaps in educational institutions and in these industries mean that considerable talent is being left out of the innovation enterprise.

**The host:** The Association for Women in Science (AWIS) builds on a 45-year legacy of driving positive change in systems and organizations through advocacy and action to build highly productive workplaces across all disciplines and employment sectors. AWIS, in partnership with the University of California and the California Life Sciences Association, is pleased to host a national dialogue on gender at the nexus of innovation and entrepreneurship with experts from industry, academia, and government. Building upon our inaugural summit which was held in partnership with The Ohio State University, this meeting will focus on how we, as a society, can develop inclusive, fiscally-responsive systems to drive research excellence, feed long-term economic growth, and fuel innovative solutions to global challenges facing all our citizens. Janet Napolitano, president of the University of California, will serve as the keynote speaker for the Oakland Summit.

**Research:** AWIS focuses on increasing the representation, advancement, and impact of women in STEM through evidence-based research, strategies, policies, and solutions that eliminate barriers and bias from the workplace. By understanding and embracing an expanded model of entrepreneurship that takes into account the experiences, motivations, and developmental needs of both genders, we enhance innovation across multiple work platforms. Program content is focused on how we, as a society, can develop inclusive, fiscally-responsive systems to drive research excellence, feed long-term economic growth, and fuel innovative solutions to global challenges facing all our citizens.

**Audience:** The Summit is a great opportunity to connect with experienced innovation professionals who represent the science, technology, engineering, and mathematics (STEM) community from corporate, academic, and government agencies. It provides a forum for the exchange of advanced knowledge on gender at the nexus of innovation and entrepreneurship while engaging panelists and participants in evidence-based and thought-provoking discussions. The Summit is geared toward practicing senior-level innovation professionals and entrepreneurs in STEM who are responsible for:

- Innovation
- Technology
- Strategy
- Workforce development
- Research

# S U P P O R T B Y

## Program Sponsors



## Media Sponsor



# S U P P O R T B Y

## Presenting Sponsors



# AGENDA

Tuesday, September 22, 2015

- 10:00 a.m. – 10:30 a.m.** Registration and Networking
- 10:30 a.m. – 10:40 a.m.** Welcome and Opening Remarks  
Ann Lee-Karlon, PhD, President, Association for Women in Science,  
Senior Vice President, Genentech  
The Honorable Libby Schaaf, Mayor of the City of Oakland
- 10:40 a.m. – 11:00 a.m.** Dialogue and Discussion: The Ideal Ecosystem - *Where Does Innovation Happen and How Does it Spread?*  
Innovation can happen anywhere, but the locus remains at universities and in industry. We examine how ideas spread across sectors, and how men and women contribute to the innovation agenda in STEM.  
**Speaker:** Laura Furstenthal, PhD, Partner, McKinsey & Company  
**Speaker:** Brian Frank, JD, Vice President, Global Sales Operations, LinkedIn
- 11:00 a.m. – 11:15 a.m.** Remarks: *UC Davis Study of California Women Business Leaders*  
Amanda Kimball, Research Specialist, University of California, Davis
- 11:15 a.m. – 11:40 a.m.** 2:1 Interview: *Creating Environments that Foster Innovation: A Roadmap for Inclusion*  
Inclusion is critical for future innovation. We explore how companies can create STEM environments that allow everyone's innovative ideas to flourish.  
**Moderator:** Vasudev Bailey, PhD, Principal, Quid  
**Speaker:** Christie Smith, PhD, Managing Principal, Deloitte, LLP  
**Speaker:** Justin Siegel, PhD, Interim Faculty Director, Innovation Institute for Food and Health
- 11:40 a.m. – 12:00 p.m.** Break
- 12:00 p.m. – 1:00 p.m.** Lunch with Keynote Address  
**Moderator:** Sara Radcliffe, MA, MPH, President and Chief Executive Officer, California Life Sciences Association  
**Speaker:** Janet Napolitano, President, University of California

# AGENDA

- 1:00 p.m. – 1:20 p.m.** 2:1 Interview: *Stimulating Creative Partnerships to Support Entrepreneurial Scientists*  
Fostering innovation must start early on; university-industrial partnerships are crucial to the process. We will discuss best practices that are in existence to support entrepreneurial scientists.  
**Moderator:** Mary Croughan, PhD, Executive Director, Research Grants Program Office, Office of Research and Graduate Studies, Office of the President, University of California  
**Speaker:** Regis Kelly, PhD, Director, QB3  
**Speaker:** Kevin Sin, Vice President, Oncology, Genentech Partnering
- 1:20 p.m. – 1:50 p.m.** Panel: *Show Me the Money: Funding Future Innovators*  
Taking an idea from the bench to the marketplace is a long and expensive process, which often overwhelms early-stage inventors. Finding new ways to finance the entire arc of innovation is important for inclusivity, and we highlight innovative funding models.  
**Moderator:** Mary Rozenman, PhD, Senior Vice President, Corporate and Commercial Development, Aimmune Therapeutics  
**Speaker:** Nat Goldhaber, PhD, Managing Director and Co-Founder, Claremont Creek Ventures  
**Speaker:** Christopher Haskell, PhD, Head, US Science Hub, Bayer HealthCare  
**Speaker:** Pamela Marrone, PhD, CEO and Founder, Marrone Bio Innovations, Inc.  
**Speaker:** Adriana Tajonar, PhD, Associate, The Column Group
- 1:50 p.m. – 2:00 p.m.** Closing Remarks  
Janet Bandows Koster, MBA, Executive Director and CEO, Association for Women in Science
- 2:00 p.m. – 3:00 p.m.** Informal Networking Reception



# SPEAKER BIOGRAPHIES



**Vasudev Bailey, PhD**  
**Principal**  
**Quid**  
**@vasudevbailey**

Dr. Vasudev Bailey is a principal at Quid, a big data company that allows you to explore and visualize the world's data. Dr. Bailey was previously the GM of the GLG Institute where he worked closely with Fortune 100 C-suite leaders. Prior to that, he served as a strategy consultant at McKinsey & Co. and has been involved in several acquired technology startups. In addition to his role at Quid, Dr. Bailey currently is an advisor to three startup companies. Dr. Bailey received his PhD in biomedical engineering from the Johns Hopkins School of Medicine and holds four provisional patents from his research in nanotechnology for the early detection of cancer. He graduated magna cum laude and Phi Beta Kappa from the University of California, Irvine.



**Mary S. Croughan, PhD**  
**Executive Director, Research Grants Program Office,**  
**Office of Research and Graduate Studies,**  
**Office of the President, University of California**

Dr. Mary Croughan is executive director of the Research Grants Program Office (RGPO) at the University of California, Office of the President. RGPO consists of several grant-giving programs that are administered by the University of California on behalf of the State of California and the University. Dr. Croughan also serves as a professor-in-residence in the Department of Obstetrics, Gynecology, and Reproductive Sciences, and in the Department of Epidemiology and Biostatistics, at the University of California, San Francisco. Dr. Croughan received her BS degree in Community Health from the University of California, Davis, and her PhD degree in Epidemiology from the Johns Hopkins University School of Hygiene and Public Health. She has served on numerous Academic Senate committees at the campus and system-wide levels, most recently serving as vice chair and chair of the University of California's Academic Senate and serving on the UC Board of Regents from 2007-09.

# SPEAKER BIOGRAPHIES



**Brian Frank, JD**  
**Vice President, Global Sales Operations, LinkedIn**  
**@brianlfrank**

Brian Frank is vice president of Global Operations at LinkedIn, the world's largest professional network, where he leads the global teams within LinkedIn responsible for making its sales organization more productive and successful. Mr. Frank is focused on helping companies transform the way they hire, market and sell by strategically managing all aspects of sales productivity and leverage, including sales operations, sales effectiveness, sales systems, sales development and advertising operations. Prior to LinkedIn, Mr. Frank spent 10 years at Ariba, where his roles included VP, GM of the Contract Management Solutions, Regional CFO of North America, and associate general counsel. He has extensive experience in selling SAAS solutions, sales operations, business systems and financial planning. Mr. Frank holds a degree from the University of California, San Diego, cum laude and a JD from Santa Clara University School of Law.



**Laura Furstenthal, PhD**  
**Principal**  
**McKinsey & Company**

Dr. Laura Furstenthal is a principal/managing partner in McKinsey & Company's San Francisco office and a leader within the healthcare practice. She serves healthcare clients in the pharmaceutical, biotechnology, medical device and payor sectors across the U.S., Europe and Asia. Her experience covers such areas as technology strategy and commercialization, supply chain operations, healthcare value, and supply chain operations. Beyond client service, she is the leader of McKinsey's West Coast Women and Families Initiative and West Coast Women's and Advanced Professional Degree Recruiting. She has authored publications in journals including Nature and speaks regularly at healthcare industry and women's leadership conferences. Dr. Furstenthal serves on multiple boards, including America Diabetes Association and Seven Hills School. She is also the mother of two children, Rory (9) and Evan (3). Dr. Furstenthal has an AB in Biology from Harvard University and received a PhD in Cancer Biology from Stanford University.

# SPEAKER BIOGRAPHIES



**Nat Goldhaber, PhD**  
**Managing Director and Co-Founder**  
**Claremont Creek Ventures**  
**@natgoldhaber**

Dr. Nat Goldhaber is a co-founder of Claremont Creek Ventures. He brings more than 30 years of information technology experience across Internet, networking, energy, healthcare, and transportation sectors as a successful investor and entrepreneur. Dr. Goldhaber has a strong record investing in technology startups across broad-impact industries. Nat has represented CCV on the boards of Clean Power Finance, Building Robotics, EcoFactor, RidePal, and DNAnexus. He also served as director at Adura Technologies (acquired by Acuity Brands). Dr. Goldhaber holds Masters and PhD (hc) degrees in Education and is an emeritus member of the Executive Board of the College of Letters and Science at UC Berkeley. He is an Advisory Board member of the Lester Center for Entrepreneurship and advisor to the Center for Entrepreneurship and Technology (CET) at UC Berkeley. Dr. Goldhaber serves as a member of the US Secret Service Electronics Crime Taskforce and is an emeritus board member and advisor to the Federation of American Scientists.



**Chris Haskell, PhD**  
**Head, U. S. Science Hub**  
**Bayer HealthCare**

Dr. Christopher Haskell leads Bayer's U.S. Science Hub, based in the company's U.S. Innovation Center located at Mission Bay, San Francisco. Dr. Haskell and his group support Bayer's Global Drug Discovery through developing and managing partnerships with U.S. academic research institutions and emerging life science firms, including the master agreement signed with UCSF in 2011. Dr. Haskell is also responsible for the development of the CoLaborator, a biotech incubator space adjacent to the company's U.S. Innovation Center that opened in the fall of 2012 in San Francisco. He is chair of the California Life Sciences Institute, the San Francisco bay area industry trade organization dedicated to fostering entrepreneurship, science education and workforce development. He also holds membership on the board of the California Life Sciences Association. Dr. Haskell graduated with a BS in Biomedical Engineering from the University of California, Berkeley and received his PhD in Cell Biology from the University of California, Davis.

# SPEAKER BIOGRAPHIES



**Regis B. Kelly, PhD**  
**Director**  
**The California Institute for Quantitative Biosciences (QB3)**  
**@QB3**

Dr. Regis B. Kelly is currently executive director of QB3, a University of California Institute created by the legislature to help grow the California economy using research in biology and the life science industries. He is a faculty member in the Department of Biochemistry and Biophysics at UCSF, where he holds the Byers Family Distinguished Professorship. He is chairman emeritus of the Bay Area Scientific Innovation Consortium (BASIC), serves on the Malaysian Prime Minister's Biotechnology Advisory Panel, and is on the board of the California Foundation for Molecular Biology and KAIST. He is also a general partner of the venture fund Mission Bay Capital and of QB3 Incubator Management, LLC, an entrepreneurship workspace. Dr. Kelly was inducted into the American Academy for Arts and Sciences and into the Bay Area Business Hall of Fame. He also has received the Biomedical Research Leadership Award from the California Society for Biomedical Science and the Salute to Excellence Award from the American Liver Foundation. In December 2013, Dr. Kelly was appointed an Officer of the Most Excellent Order of the British Empire (OBE), "for services to science, innovation and global health." Dr. Kelly earned an undergraduate degree in Physics from the University of Edinburgh and a PhD in biophysics from the California Institute of Technology.



**Amanda Kimball**  
**Research Specialist**  
**University of California, Davis**  
**@amandakimball99**

Amanda Kimball is a research specialist collaborating on faculty research projects. She authors the school's annual "UC Davis Study of California Women Business Leaders." Ms. Kimball collaborates with faculty on academic research projects and often presents census results to the media and related audiences. She spent time in a PhD program for Economics at the University of California, Davis, where she earned her masters degree in 2003, with concentrations in Microeconomic Theory and Industrial Organization. Prior to that she received her undergraduate degree in Economics from the University of Virginia. Ms. Kimball has a background in business and economics including having worked for Capital One, the Investment Company Institute, and the Corporate Executive Board.

# SPEAKER BIOGRAPHIES



**Janet Bandows Koster, MBA**  
**Executive Director and CEO**  
**Association for Women in Science**  
**@AWISNational**

Janet Bandows Koster, MBA, Executive Director and Chief Executive Officer, Association for Women in Science (AWIS), has served in that position since July 2006. She has over 25 years of experience leading organizations in both the United States and overseas with particular expertise in global gender and workforce issues. In addition to her newest book “Equitable Solutions for Retaining a Robust STEM Workforce: Beyond Best Practices,” which addresses work/life integration and satisfaction issues faced by those in STEM careers, Ms. Bandows Koster has authored numerous reports and presented at professional meetings about issues at the nexus of gender and science, technology, engineering, and mathematics (STEM). Ms. Bandows Koster holds degrees in international relations as well as an MBA. She is a Certified Association Executive, a member of the American Society of Association Executives and the Council of Engineering and Scientific Society Executives.



**Ann Lee-Karlon, PhD**  
**President, Association of Women in Science (AWIS)**  
**Senior Vice President, Genentech**  
**@genentech**

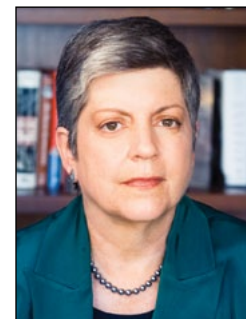
Dr. Ann Lee-Karlon serves as president and chair of the Board of Directors for the Association of Women in Science (AWIS), based in Washington, D.C. Dr. Lee-Karlon also serves as senior vice president at Genentech, a world leading biotechnology company that discovers and develops medicines to treat patients with serious or life-threatening medical conditions. At Genentech, she leads Portfolio Management and Operations with oversight for over 35 drug development teams in the pipeline across multiple therapeutic areas, including oncology, immunology, ophthalmology, infectious diseases, and neuroscience. She heads business operations for the R&D division. Prior to joining Genentech in 2002, Dr. Lee-Karlon was a venture leader at Eli Lilly. She has served as a senior scientist in biotech in La Jolla, California and interned at UBS investment bank in London. Dr. Lee-Karlon holds an MBA from Stanford University, BS in Bioengineering from the University of California at Berkeley, and PhD in Bioengineering from the University of California at San Diego as a National Science Foundation (NSF) Research Fellow. She completed an NSF international postdoctoral fellowship at the University College London. She holds U.S. and international patents in vascular tissue engineering. Dr. Lee-Karlon also serves on the Board of Trustees for the Genentech Access to Care Foundation, one of the top foundations in the U.S. by total giving.

# SPEAKER BIOGRAPHIES



**Pamela Marrone, PhD**  
**CEO and Founder**  
**Marrone Bio Innovations, Inc.**  
**@pammarrone**

Dr. Pamela Marrone, CEO, started Marrone Bio Innovations (MBI) in 2006 to discover, develop and market bio-based products for pest management and plant health. In 2013, MBI listed on NASDAQ. MBI has four commercial products and several more in the pipeline. In October 2014, Dr. Marrone was awarded Agrow’s “Best Manager with Strategic Vision” for her career-long leadership in biopesticides. Dr. Marrone received the NRDC’s Growing Green Award in “Business Leader” category. The company received the Governor’s Environmental and Economic Leadership Award and a California Department of Pesticide Regulation IPM Innovator award. Dr. Marrone founded AgraQuest in 1995 and served as its CEO, chairman and president until March 2006. AgraQuest commercialized several biopesticide products that became the biological standards for their categories. Before AgraQuest, she was founding president and business unit head for Entotech, Inc. in Davis (CA), a biopesticide subsidiary of Denmark-based Novo Nordisk. At Monsanto, she led the Insect Biology group. She is treasurer of the Association for Women in Science, is on the Board of the Association of Applied IPM Ecologists Foundation and is board member of the Organic Farming Research Foundation. She is founding chair of the Biopesticide Industry Alliance. She was elected by her peers as a Fellow of AAAS (American Assoc. for the Advancement of Science). She has a BS in entomology with Honors and Distinction from Cornell University and a PhD in entomology from North Carolina State University.



**Janet Napolitano, JD**  
**President**  
**University of California**

Janet Napolitano was named the 20th president of the University of California on July 18, 2013, and took office on Sept. 30, 2013. Since then, she has launched initiatives to enhance community college transfers; achieve carbon neutrality across the UC system by 2025; speed translation of UC research into products and services; focus UC resources on local and global food issues; improve services for student veterans; strengthen engagement with Mexico and provide financial support for undocumented students to put them on equal financial-aid footing with other students. She leads a university system with 10 campuses, five medical centers, three affiliated national laboratories, and a statewide agriculture and natural resources program. The UC system has more than 234,000 students, about 208,000 faculty and staff, more than 1.6 million living alumni and an annual operating budget of more than \$25 billion. President Napolitano previously served as Secretary of Homeland Security from 2009-13, as Governor of Arizona from 2003-09, as Attorney General of Arizona from 1998-2003, and as U.S. Attorney for the District of Arizona from 1993-97. She earned a BS degree in Political Science from Santa Clara University (summa cum laude and Phi Beta Kappa) and received her law degree from the University of Virginia School of Law.



# SPEAKER BIOGRAPHIES



**Sara Radcliffe, MA, MPH**  
**President and Chief Executive Officer**  
**California Life Sciences Association**

Sara Radcliffe was appointed as president and chief executive officer of the California Life Sciences Association in January 2015. She previously served as president and chief executive officer of the Biomedical Innovation Alliance (CBI). Ms. Radcliffe formerly served as the executive vice president for Health at the Biotechnology Industry Organization (BIO). Previously, she also served as senior director, Biologics & Biotechnology at the Pharmaceutical Research and Manufacturers of America (PhRMA). Prior to her role at PhRMA, she served in the Alliance and Technology Group at SmithKline Beecham Pharmaceuticals as a research and development policy analyst, working on evaluation and communication of the promise, ethics, and impact of rapidly-developing technologies in DNA Research. In addition she worked for the Core Services Committee of the New Zealand Ministry of Health. Ms. Radcliffe holds a Master of Public Health and a Master of Arts in Philosophy from the Johns Hopkins University, and a Bachelor of Arts from Wellesley College.



**Mary Rozenman, PhD**  
**Senior Vice President, Corporate and Commercial Development**  
**Aimmune**  
**@maryrozenman**

Dr. Mary Rozenman is Aimmune's Senior Vice President of Corporate and Commercial Development. Prior to joining Aimmune in 2015, Dr. Rozenman was a Vice President at Longitude Capital, where she focused on mid-stage biotechnology investments and was an observer on Aimmune's Board of Directors. Dr. Rozenman was previously a Junior Partner at McKinsey & Company and a leader in the Healthcare and Corporate Finance practices. Dr. Rozenman holds a PhD in Organic Chemistry and Chemical Biology from Harvard University and a BA in Russian Literature and Biochemistry from Columbia University. Her scientific work has been published in premier scientific journals, including Nature, and she is a named inventor on several patents.

# SPEAKER BIOGRAPHIES



**The Honorable Libby Schaaf**  
**Mayor**  
**City of Oakland**

Mayor Libby Schaaf was inaugurated Oakland, California's 50th mayor on January 5, 2015. A native Oaklander, Mayor Schaaf previously served one term as a member of the Oakland City Council. Mayor Schaaf has more than two decades of public service experience that began while she was a young attorney leading volunteer efforts in Oakland. She left her legal career at Oakland's largest law firm to build and run the first centralized volunteer program for Oakland public schools at the Marcus Foster Institute. Mayor Schaaf then went on to become chief of staff to the Council President, aide to then-Mayor Jerry Brown and public affairs director for the Port of Oakland. She is honored to serve the people of Oakland and to help promote her hometown as the greatest place to live, work, play and do business. She is committed to revitalization that preserves and celebrates Oakland's diversity and leads to direct prosperity for long-time residents and newcomers. Her four areas of focus as mayor are: holistic community safety, sustainable vibrant infrastructure, equitable jobs and housing and responsive trustworthy government. She graduated from Rollins College with a degree in Political Science and received her JD, Law from Loyola Law School, Los Angeles.



**Justin Siegel, PhD**  
**Interim Faculty Director**  
**Innovation Institute for Food and Health**  
**@siegel\_justin**

Dr. Justin Siegel currently serves as interim faculty director of the Innovation Institute for Food and Health. Launched in 2015 by the University of California, Davis and Mars Company, the Innovation Institute for Food and Health aims to enable academics and business to work seamlessly together in order to tackle the grand challenges of: nutrition for all, sustainable agricultural practices, and food safety. Dr. Siegel has received a number of awards which include the Harold M. Weintraub Graduate Student Award presented by the Fred Hutchinson Cancer Research Center, as well as being named a Molecular Biophysics NIH Fellow at the University of Washington. He received his BS in Biochemistry from the University of California, Davis and his PhD in Biological Physics, Structure and Design from the University of Washington.

# SPEAKER BIOGRAPHIES



**Kevin Sin, JD**  
**Vice President, Oncology, Genentech Partnering**  
**Genentech**  
**@genentech**

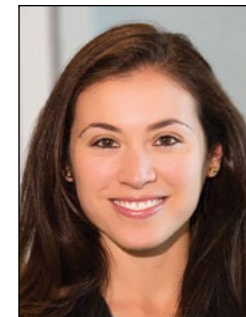
Kevin Sin is vice president, Oncology, Genentech Partnering. In this role, he leads the team responsible for sourcing, evaluating and negotiating transactions for partnering opportunities for new cancer therapeutics. Mr. Sin has served the biopharmaceutical industry for over 20 years with roles in business development, legal and research. Prior to Genentech, he was an attorney at Wilson Sonsini Goodrich & Rosati where he specialized in advising private and public life sciences companies on strategic business and partnering transactions. He began his career as a scientist in the Biotechnology Unit of Bayer Corporation. Mr. Sin received his BA in Molecular and Cell Biology from the University of California, Berkeley and his JD from the University of San Francisco School of Law.



**Christie Smith, PhD**  
**Regional Managing Principal, Consulting**  
**Lead Consulting Partner and Advisory Partner**  
**Deloitte, LLP**  
**@christie\_smith2**

Dr. Smith is the managing principal for consulting in the west region of the United States. Her responsibilities include markets, clients, talent and community for more than 2,400 consulting practitioners and more than 250 principals and directors. She is also a lead consulting partner and advisory partner on several of Deloitte's largest life sciences/biotech clients. With more than 25 years of experience, she has a passion for serving clients and bringing innovative and effective solutions to their most important business, market and talent issues. Dr. Smith focuses her work with clients on aligning business strategy with the requirements of organizational structure, talent, leadership development and global workforce planning. She has been recognized in 2012, 2013 and 2014 as one of San Francisco's Most Influential Women and in 2015 was one of San Francisco's Forever Influential Women by the Business Times. Dr. Smith is a board member at Seattle Children's Hospital and advisory council for New America's Caregivers & Breadwinners. She has a MSW from Rutgers University, and a PhD in Social Work/IO Psychology from New York University.

# SPEAKER BIOGRAPHIES



**Adriana Tajonar, PhD**  
**Associate**  
**The Column Group**

Dr. Adriana Tajonar is an Associate at The Column Group (TCG), a science-driven venture capital firm nurturing a select group of early stage drug discovery companies with unique scientific platforms. TCG makes significant financial and operational commitments to build and grow companies based on big ideas and innovative science to generate breakthrough therapies that address important diseases. Prior to her role at TCG, Dr. Tajonar was entrepreneurship program manager at QB3 (California Institute for Quantitative Biosciences) where she led the QB3 Startup in a Box Program and helped over 200 teams of scientists from top institutions in California start companies in the life sciences. She also participated in the evaluation of opportunities for Mission Bay Capital, a QB3-affiliated seed-stage venture fund. Dr. Tajonar obtained her PhD at Harvard University and her BS at the Massachusetts Institute of Technology.



# A B O U T

@AWISNational

<http://www.innovation-summit.org/>

#womeninvent

## THE ASSOCIATION FOR WOMEN IN SCIENCE

Founded in 1971, the Association for Women in Science (AWIS) is the largest multi-discipline organization for women in science, technology, engineering and mathematics (STEM). We are dedicated to driving excellence in STEM by achieving equity and full participation of women in all disciplines and across all employment sectors. AWIS reaches more than 20,000 professionals in STEM with members, chapters, and affiliates worldwide. Membership is open to any individual who supports the vision and mission of AWIS.

## VISION

AWIS has a vision for women in STEM to be:

- Compensated fairly and without discrimination
- Advanced equitably and without bias
- Exposed to successful role models in leadership positions
- Recognized and respected for their scientific and leadership achievements

## MISSION

AWIS champions the interests of women in science, technology engineering, and mathematics across all disciplines and employment sectors. Working for positive system transformation, AWIS strives to ensure that all women in these fields can achieve their full potential.

## STRATEGIC FOCUS AREAS

The AWIS Strategic Plan for 2015-2017 focuses on three strategic pillars:

1. Positive system transformation
2. Leadership and talent development
3. Organizational capacity

For additional information and to join AWIS, go to [www.awis.org](http://www.awis.org) or email [awis@awis.org](mailto:awis@awis.org)

Association for Women in Science  
1321 Duke Street, Suite 210  
Alexandria, VA 22314  
703.894.4490